

## MODEL ULK

Paper and Pulp Industry

### CLOGLESS VOLUTE PUMP

#### Features

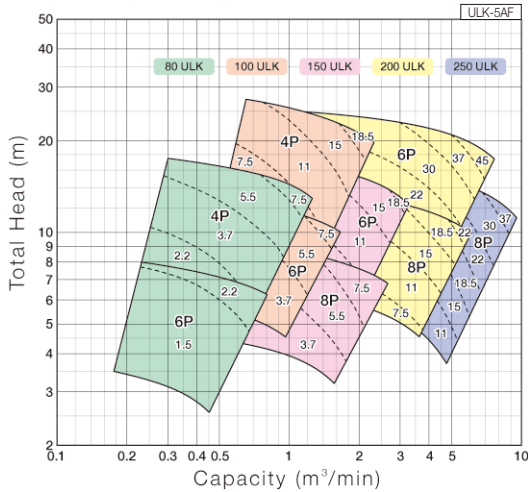
- Equipped with a specially designed clogless impeller that prevents the pump from being clogged even if the flowing liquid contains foreign matter such as sewage and excretion.



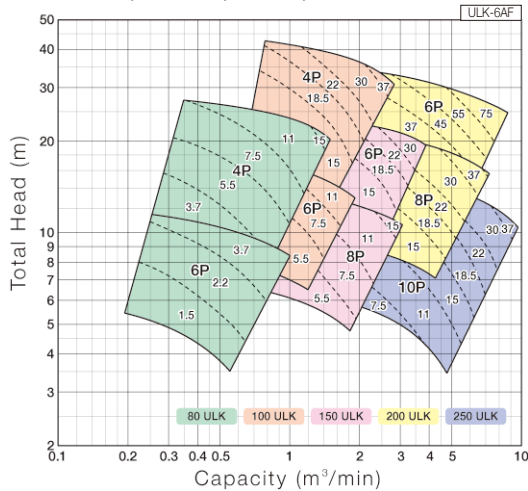
Liquid	Specification	Waste water/Waste solids/Sludge/Pulp
	Temperature	0 to 80°C
Allowable suction pressure		0.3MPa {3kgf/cm <sup>2</sup> }
Max. working pressure		0.64MPa (6.6kgf/cm <sup>2</sup> ) Bore 250: 0.32MPa {3.3kgf/cm <sup>2</sup> }
Construction	Impeller	Non-clog type
	Shaft seal	Gland packing, Non-flushing seal/Flushing seal
	Flushing	External flushing
	Bearing	Ball bearings/Oil bath
Flange		Special
	Casing	FC200
Materials (*1)	Suction cover	FC200, HCrFC
	Impeller	FC200, SCS13/HCrFC
	Shaft	S35C, SUS304/SUS403
	Shaft sleeve	SUS403, SUS316/SUS403 coating processed
Drive system (Option)		V belt-driven
Others (Option)		Epoxy paint in wetted parts, New base

\*1. All iron material combination is applicable.

4 Pole, 6 Pole, 8 Pole/50Hz



4 Pole, 6 Pole, 8 Pole, 10 Pole/60Hz



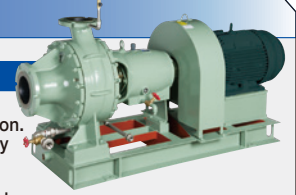
## MODEL IFMZ

Paper and Pulp Industry

### SCREW VOLUTE PUMP

#### Features

- Non-clogging.
- Easy flow control with little flow fluctuation.
- Less reduction in pump head when highly concentrated liquid is used.
- Compact design.
- Excellent resistance against a piping load.



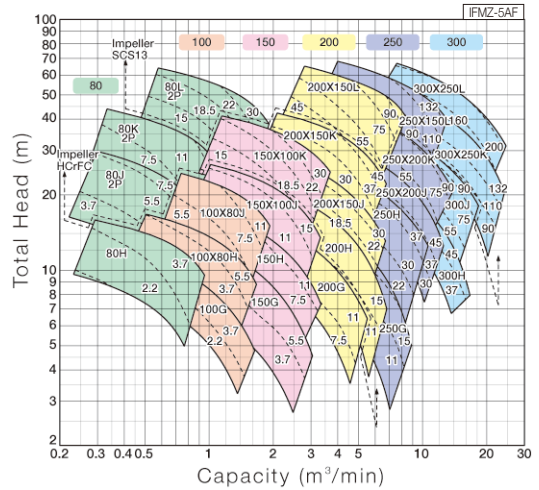
Liquid	Specification	Waste water/Waste solids/Sludge/Pulp
	Temperature	0 to 80°C
	Particle size	Max. passage particle size 33 to 200mm (*1)
Allowable suction pressure		0.088 to 0.196MPa(G) (*1)
Max. working pressure		0.52 to 1.37MPa(G) (*1)
Location		Indoor/Outdoor
Construction	Impeller	Screw spiral
	Shaft seal	Gland packing/ Half-split seal (Flushing type/Non-flushing type)
	Flushing	External/Non
	Lubrication	Oil bath
	Casing support type	Bracket support (80H,100G,100X80H,150G) Foot support (besides of above models)
Flange		Special
	Casing	FC250 (*2)
Materials	Suction cover	high-chrome cast iron
	Impeller	high-chrome cast iron (*3)
	Shaft	S35C
	Shaft sleeve	SUS403

\*1. It varies depending on the model.

\*2. High-chrome cast iron is applicable.

\*3. Model 200X150IFMZL, 250X150IFMZL is SCS13.

50Hz 2 Pole, 4 Pole



60Hz 2 Pole, 4 Pole

